

# Morgellons:

## An International Presence

by

Clifford E Carnicom

Aug 10 2016

In an effort to provide continuing documentation of the *Morgellons* condition, the following images are provided. The magnification of the series progresses from approximately 100x to 5000x. The samples originate from the scalp of an individual and multiple examples have been provided under clean and controlled conditions. The network of filaments, although compact and dense, is completely commensurate with previous samples that have been examined over the years.

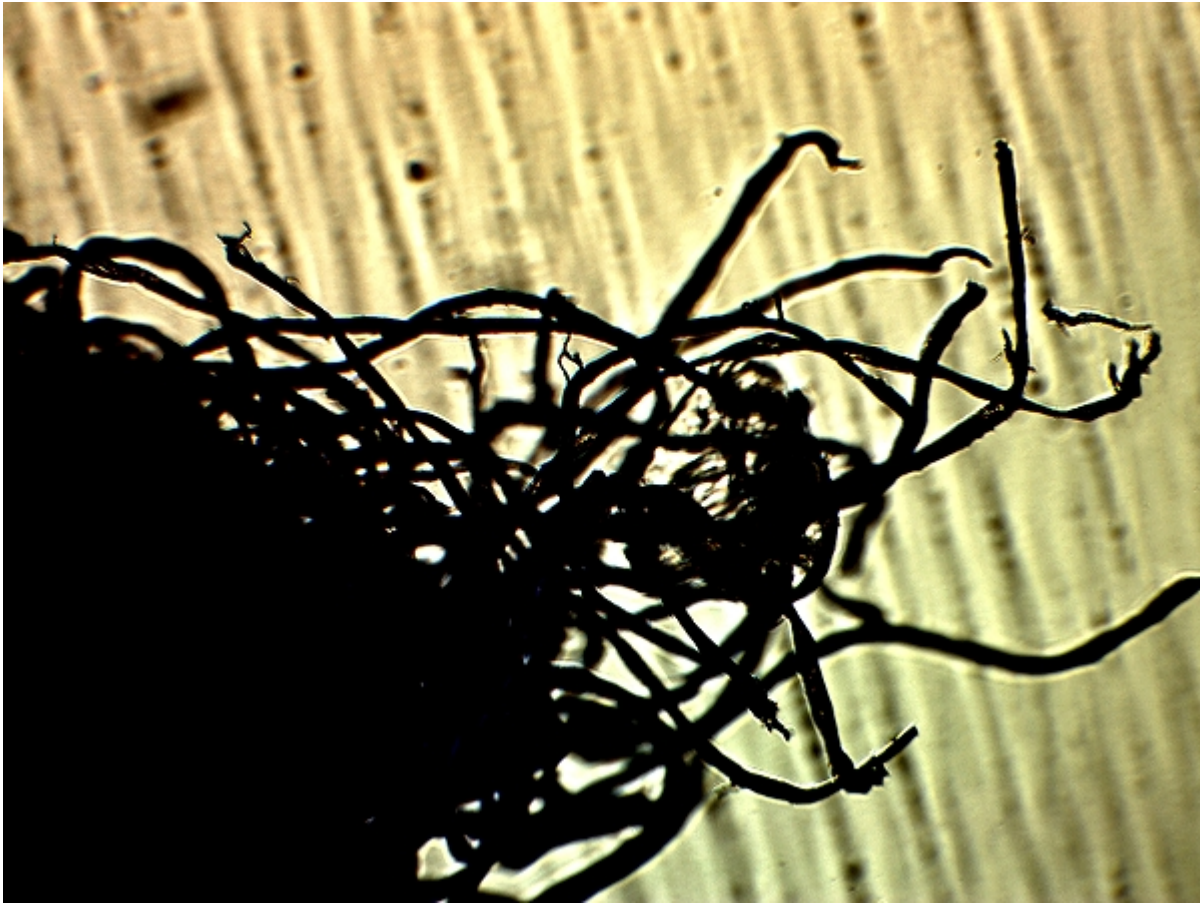
The filament networks taken from the skin of the affected individual come from a person that resides in France. Overwhelming evidence continues to mount that the source of the condition is environmental in nature, origin and distribution. This most recent example demonstrates the international scope of the this continuing and unaddressed public health issue.



Low power image (top lit) of a representative filament network taken from the skin of the individual. The sample, in general, is difficult to image

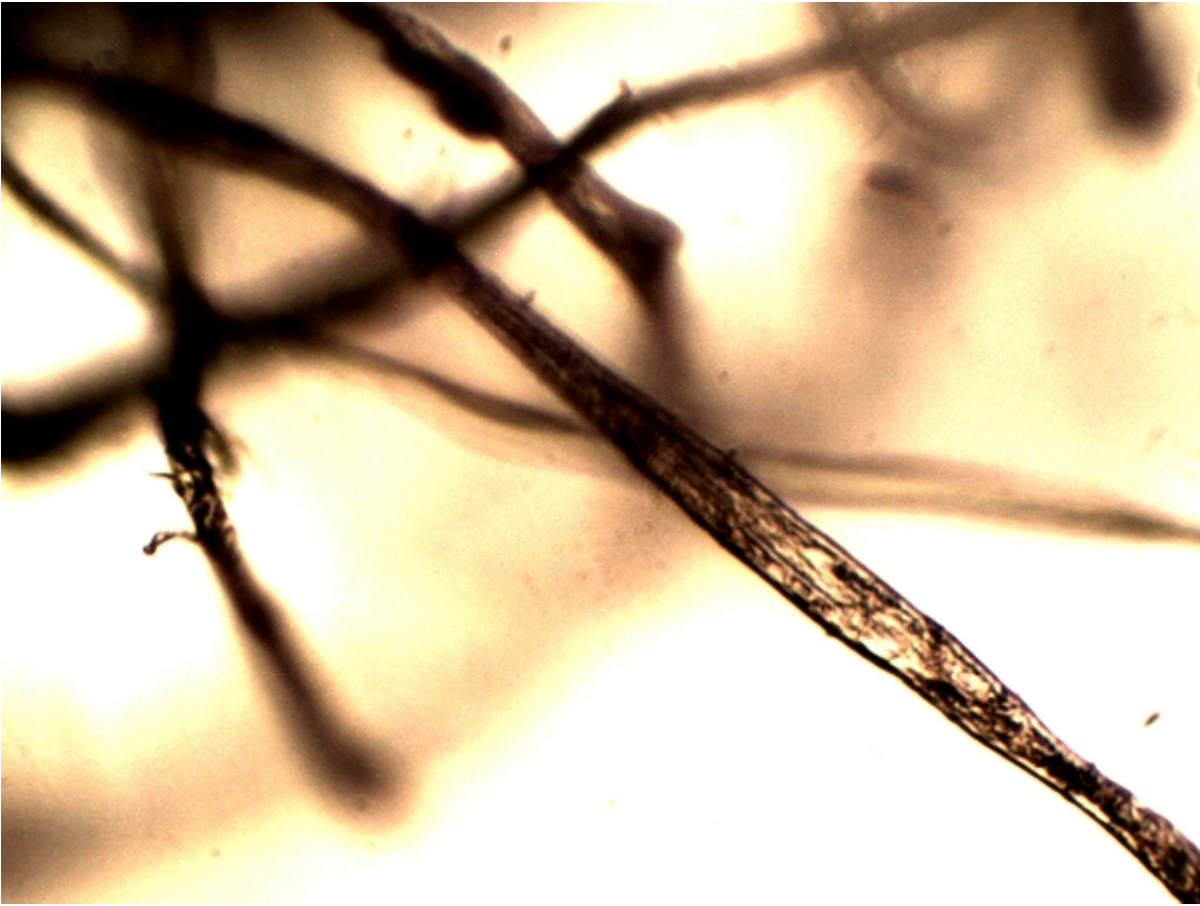
because of the density of the network. The samples measure approximately 1 mm in length. Various microscopy configurations have been used to collect these images.

Magnification approx. 100x.

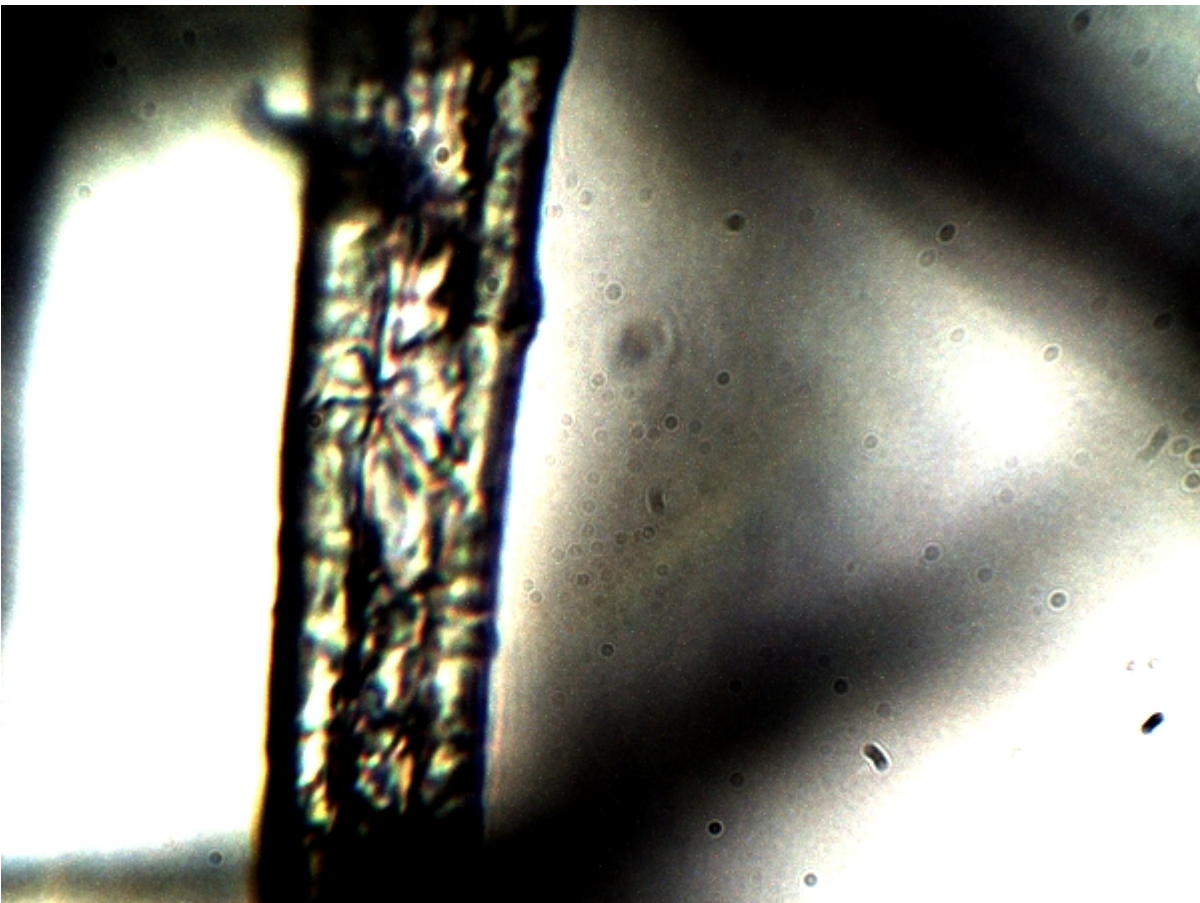


A silhouette view on the edge of the filament network.

Magnification approx. 350x.



First level of internal detail of filament network becomes visible.  
Magnification approx. 1500x.



The complex internal nature of filament network is revealed. Extensive discussion on the internal structure of the filament form of growth exists on this site.

Magnification approx. 5000x.